



# FILE BASED MEDIA WORKFLOWS IN THE CLOUD

MOVING THE WORLD'S DATA AT MAXIMUM SPEED

## PRESENTER

**Jay Migliaccio**

Director Cloud Platforms and Services  
jay@asperasoft.com

## AGENDA

Aspera

Technology and Media

Cloud stories

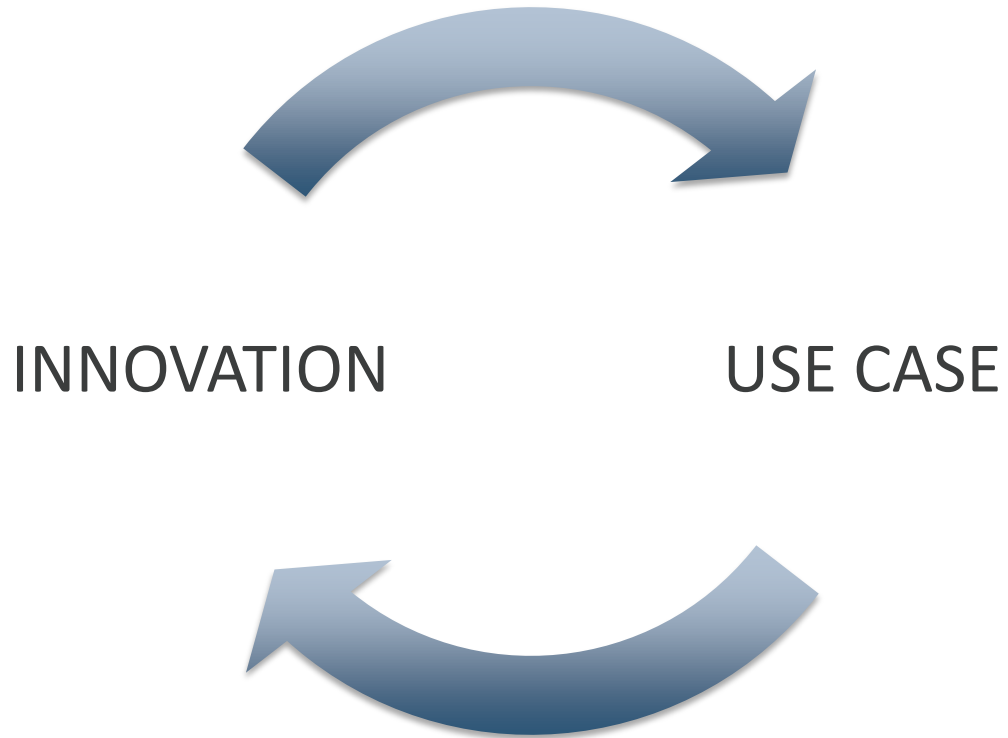
Big data delivery challenges







# INNOVATION USE CASE



# Customer Stories



# Experimenting with the Cloud

Business challenge:

“Leverage our media assets on a new platform”

Technical challenge:

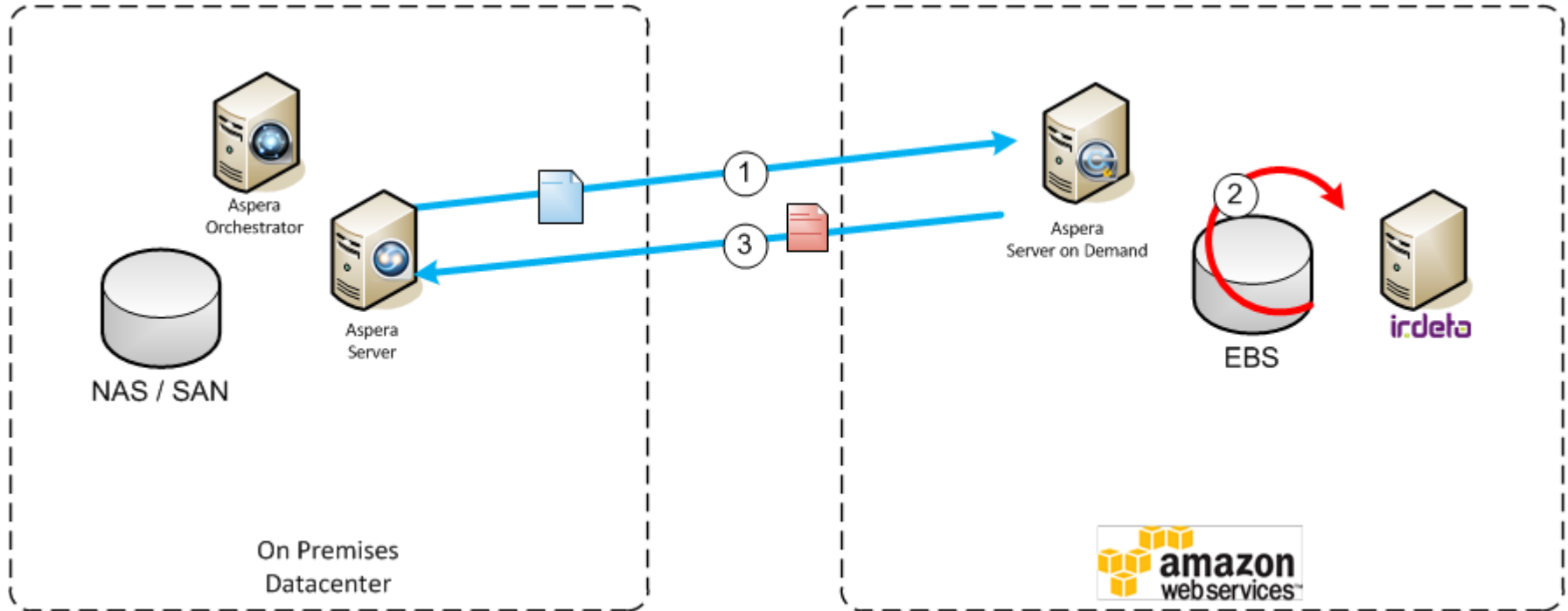
- 2,000 assets
- 10 GB per asset
- Needs to be DRM “Playready” encrypted
- By next Friday

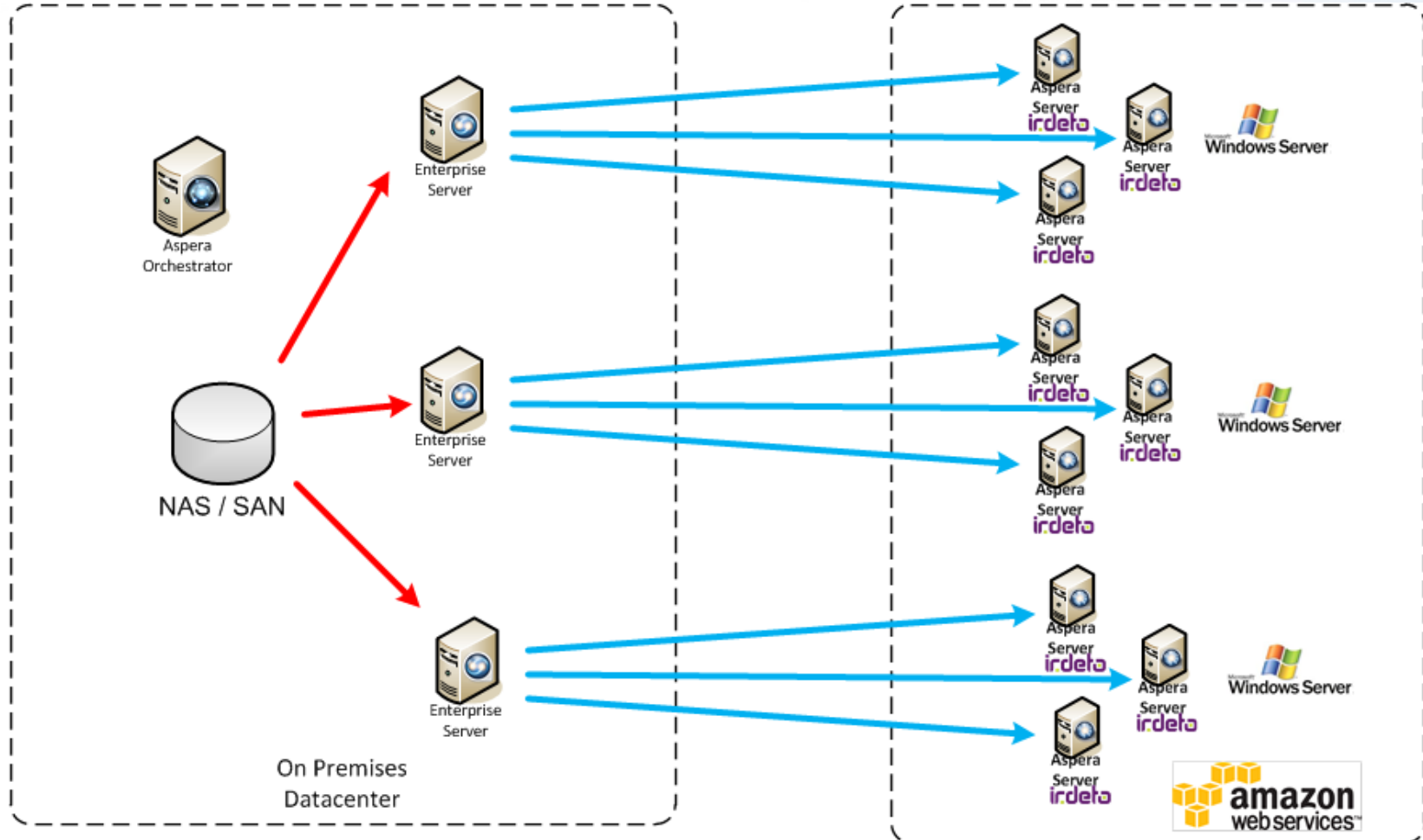
## Infrastructure challenge:

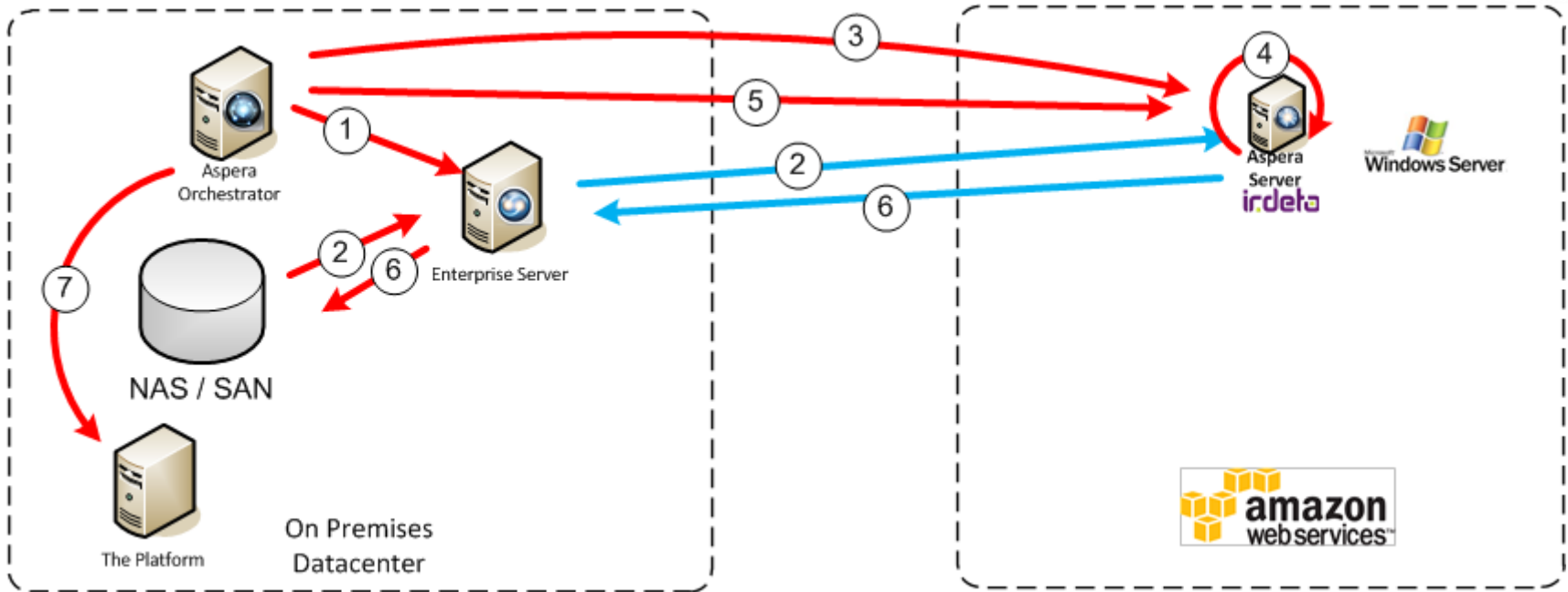
- No spare systems
- No encryption software
- No Cap-ex budget for last minute projects

## What is the solution?

- Need infrastructure now
- Need lots of it for a short project







## In summary

- The cloud can scale
- The cloud is available on demand
- The cloud is pay-as-you-go

## Can this work? What are the potential bottlenecks?

- On-premises storage
- On-premises firewall

Is traditional on premises IT infrastructure ready for the challenges of tomorrow?

# Moving to the Cloud



## Business challenge:

“We are shutting down our datacenter and moving everything to the cloud.”

## Technical challenge:

- Ingest movie and tv show assets into AWS S3
- Average 100 TB per month
- Multiple content providers

 NETFLIX

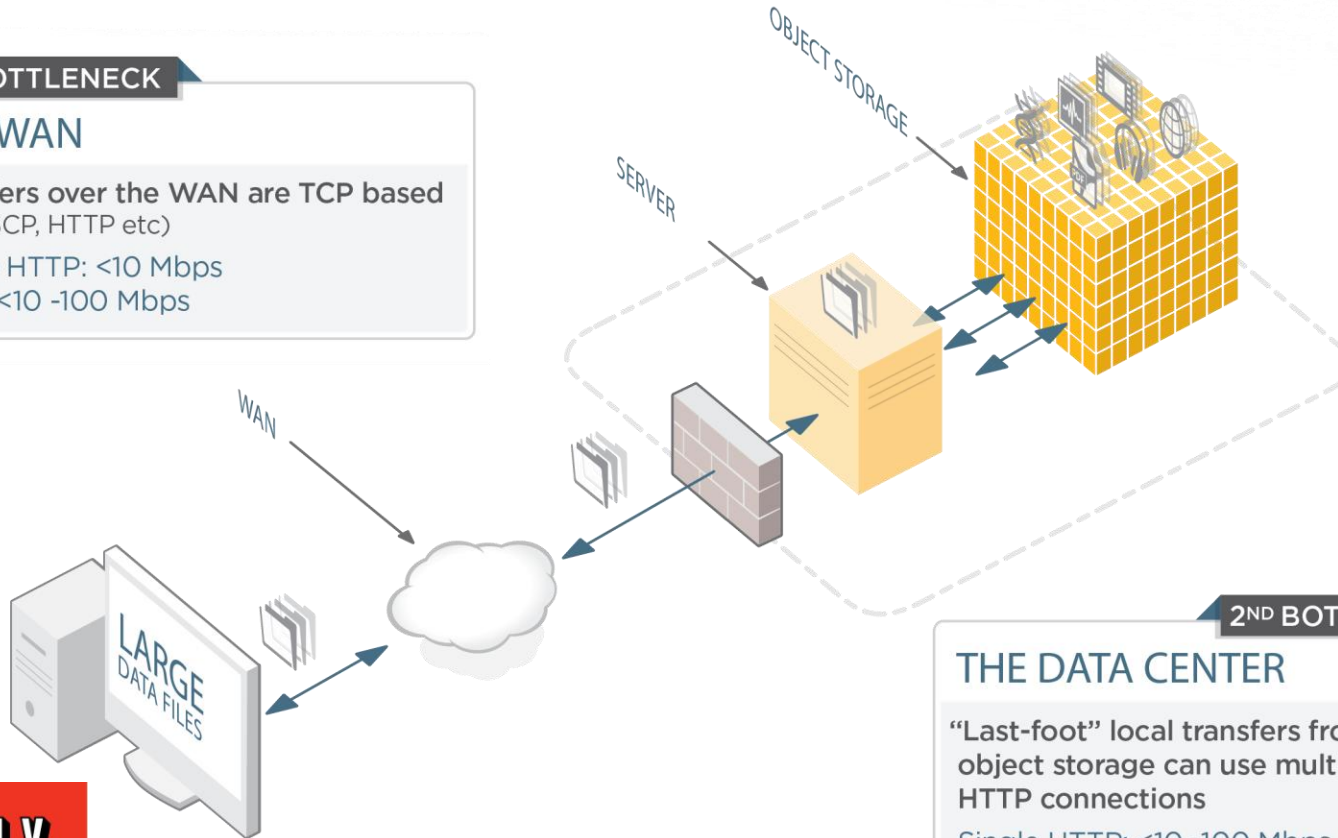


## 1<sup>ST</sup> BOTTLENECK

### THE WAN

Transfers over the WAN are TCP based  
(FTP, SCP, HTTP etc)

Single HTTP: <10 Mbps  
Multi: <10 -100 Mbps



## 2<sup>ND</sup> BOTTLENECK

### THE DATA CENTER

“Last-foot” local transfers from server to object storage can use multiple HTTP connections

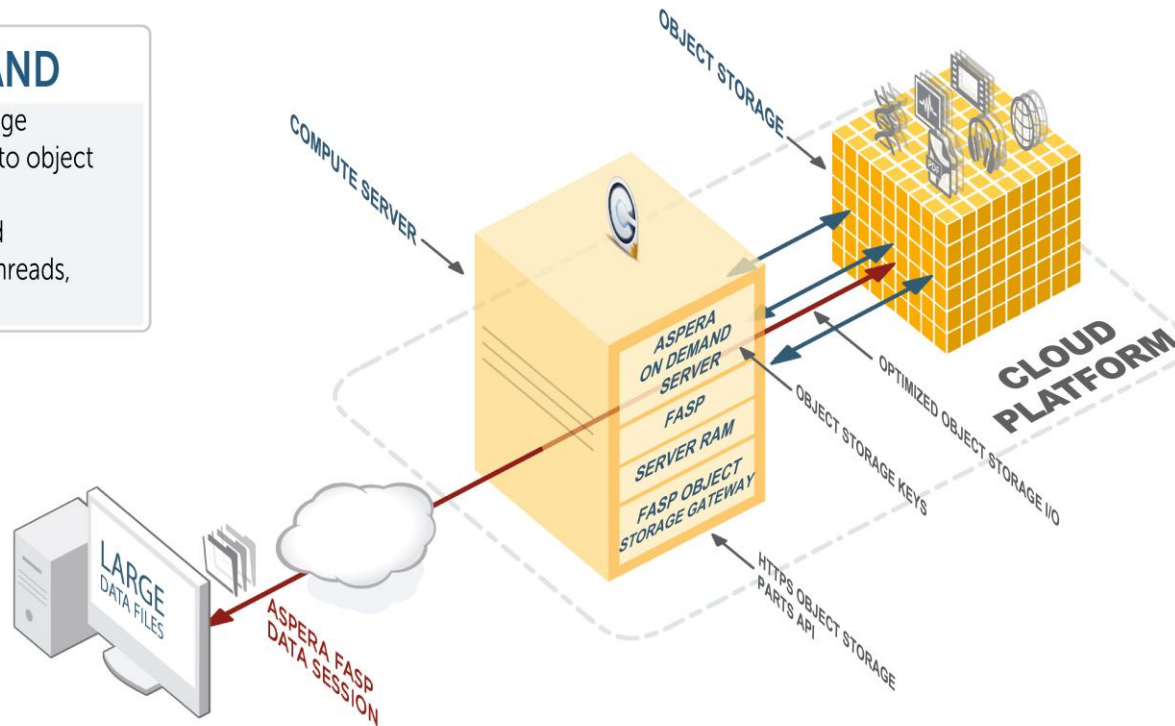
Single HTTP: <10 -100 Mbps

THE SOLUTION

ASPERA ON DEMAND

- Full client-side r/w of object storage
- Synchronous transfer from client to object storage (via Aspera On Demand)
- *asp*<sup>™</sup> transfer speeds end-to-end
- Real-time optimization of HTTP threads, chunk size, interfaced to *asp*

Client Software



Performance

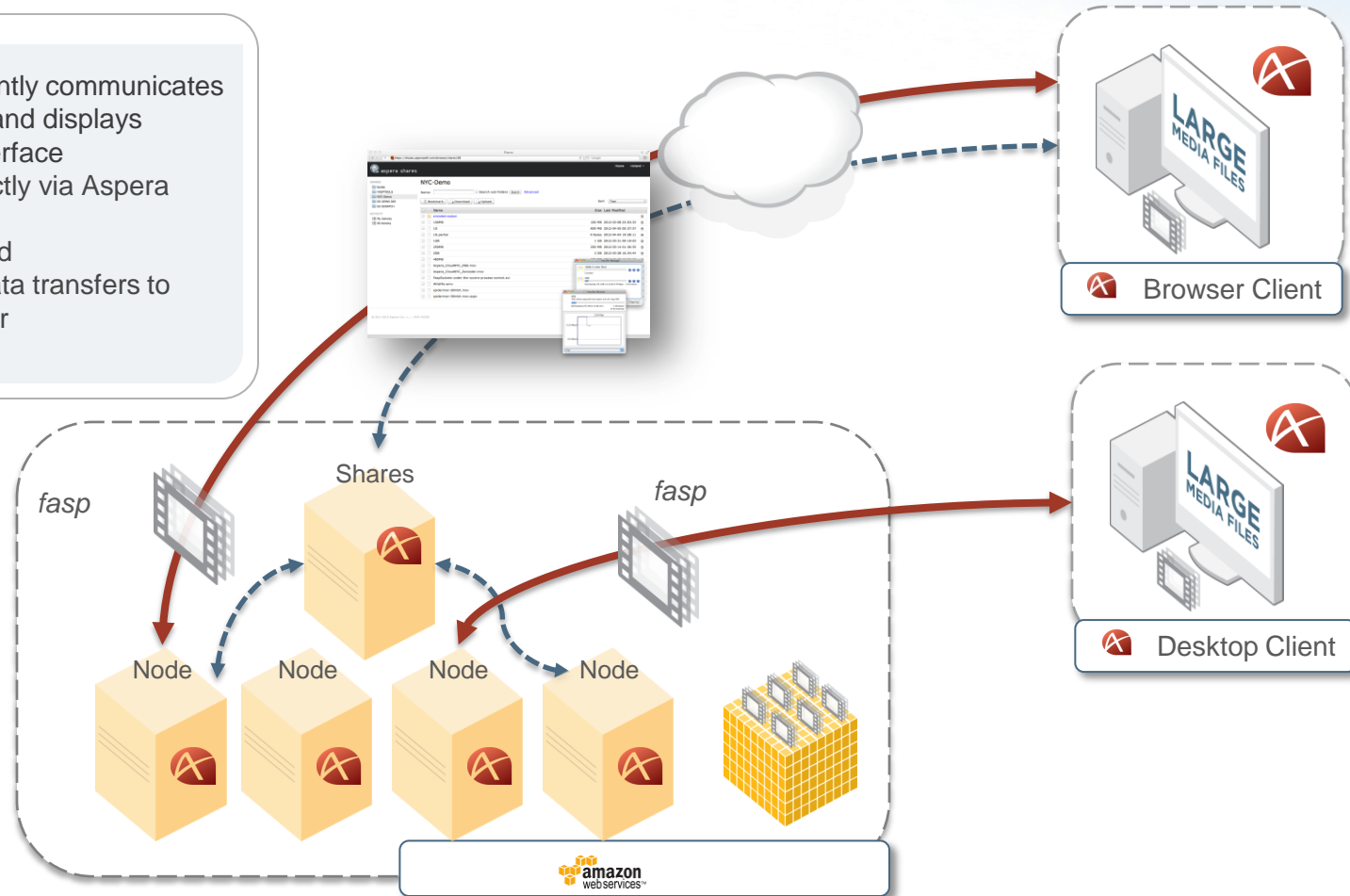
EFFECTIVE THROUGHPUT

up to 1Gbps  
(per server Extra Large Instance)  
10TB per 24 hours



## THE SOLUTION

- Shares Web app transparently communicates with Aspera server Nodes and displays content in a single user interface
- Aspera Client uploads directly via Aspera Transfer Servers
- CLI transfers also supported
- Independent high-speed data transfers to AWS S3 transparent to user



## What is next?

- Elastic scale of the infrastructure, on demand

# Innovating on the Cloud

## Sony Media Cloud Services

- New cloud-based collaboration and production service platform from Sony built on AWS
- Applications support collection, production and archive of high-value, high-definition content
- Integrated with Aspera *fasp* for high-speed ingest and distribution



# MEET CI.

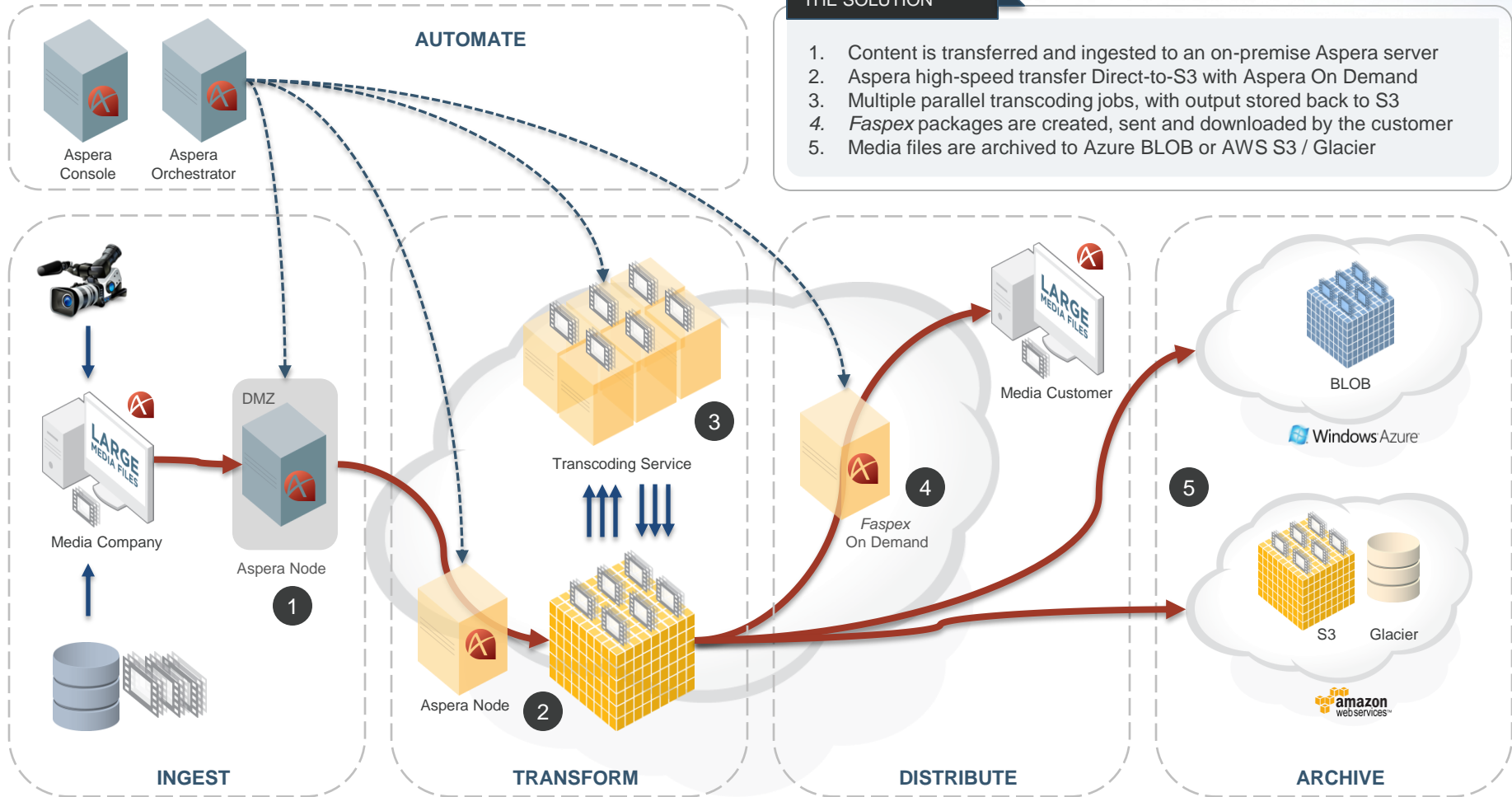
Ci is the brainchild of Sony's evil media geniuses who, after witnessing the challenges and complexities of today's media marketplace, built an innovative cloud platform with revolutionary production applications to cure the headaches that surround collecting, collaborating, and preparing content for the world once and for all.

Our on-demand tools are the industry's first innovative production applications created by media professionals, for media professionals to collect, share, create, produce, and archive high-value, high-resolution content more efficiently. With Ci, you can collaborate globally from any location – all with the simplicity, security, scalability, and affordability of the cloud.



[www.sonymcs.com](http://www.sonymcs.com)





## THE SOLUTION

1. Content is transferred and ingested to an on-premise Aspera server
2. Aspera high-speed transfer Direct-to-S3 with Aspera On Demand
3. Multiple parallel transcoding jobs, with output stored back to S3
4. *Faspex* packages are created, sent and downloaded by the customer
5. Media files are archived to Azure BLOB or AWS S3 / Glacier

# **File transfer challenges volume**

100 TB per month

20 TB up & down in 48 hours

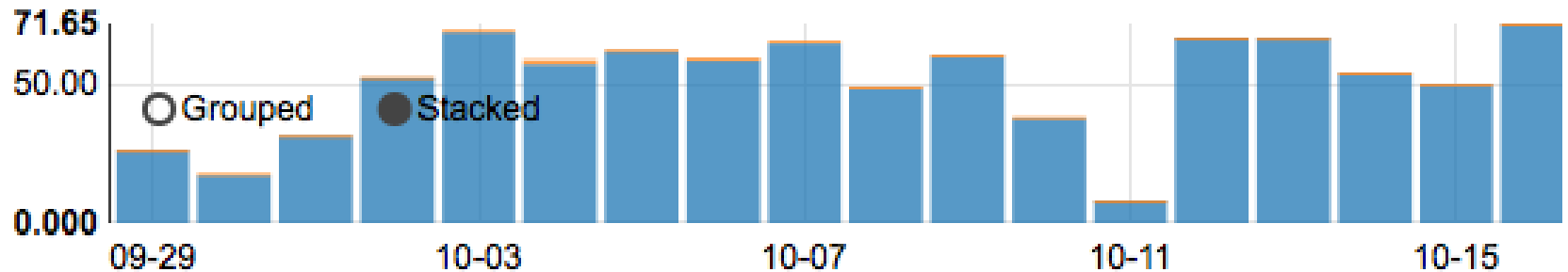
3 PB data

2 Gbps aggregate upload

# Overall usages

2013-09-29 - 2013-10-28

MB  GB  TB

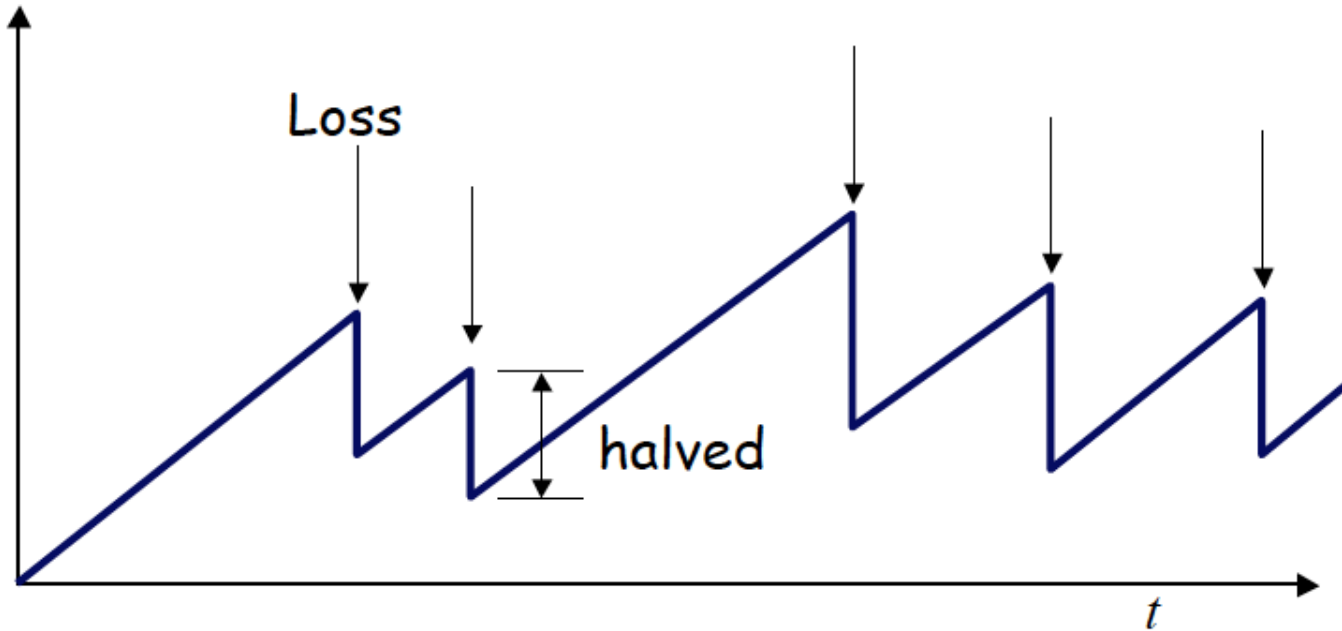


# **File transfer challenges**

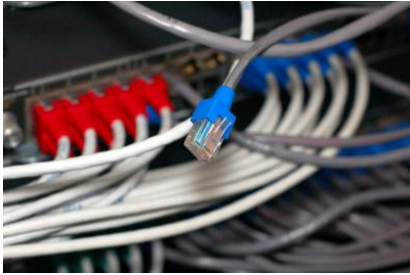
## **Speed and Control**

# The TCP problem...

*Window*



# The infrastructure bottleneck...



# **File transfer challenges**

## **The eco-system**



## CLOUD



## MEDIA

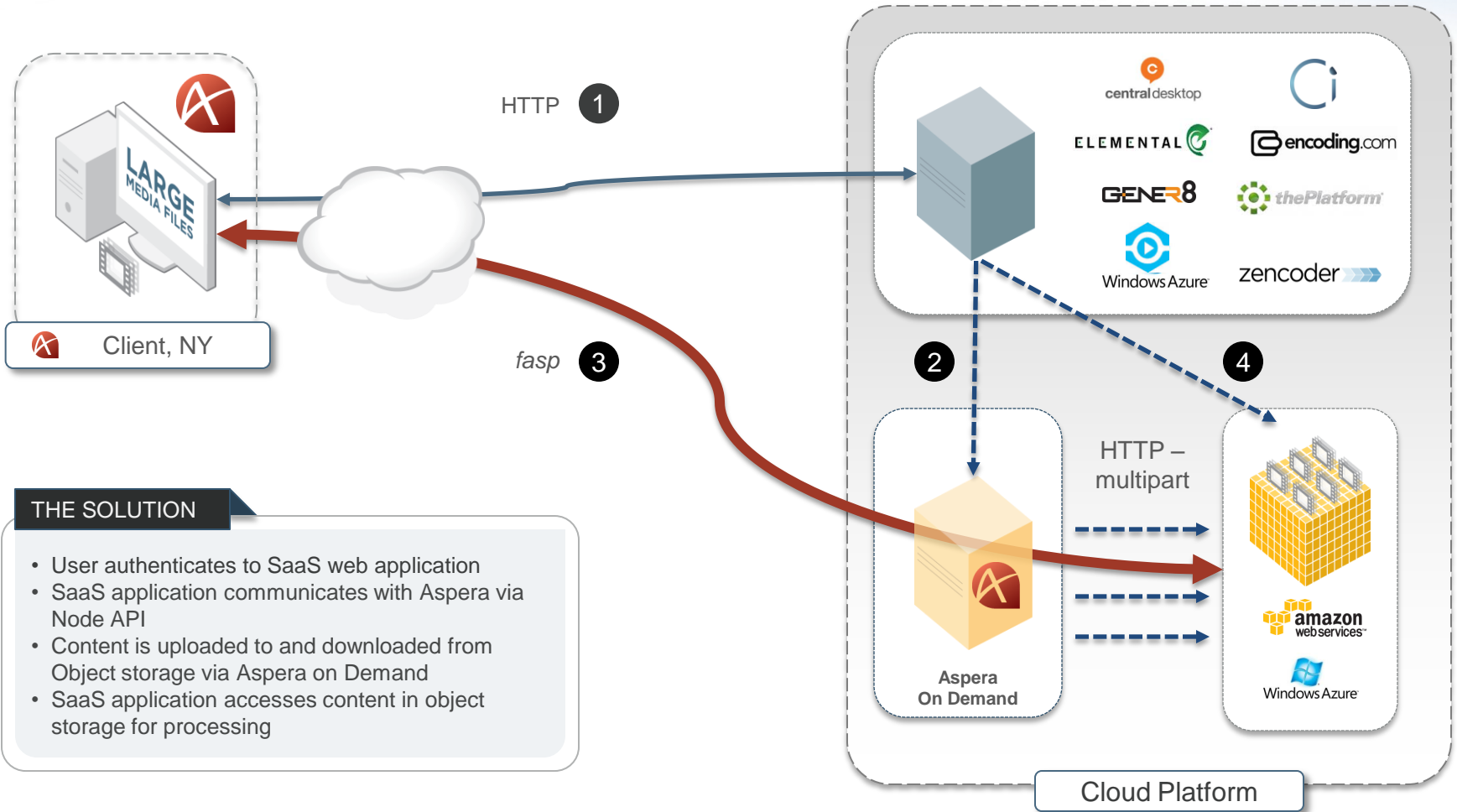


## SERVICE AND TECHNOLOGY



## STORAGE





## THE SOLUTION

- User authenticates to SaaS web application
- SaaS application communicates with Aspera via Node API
- Content is uploaded to and downloaded from Object storage via Aspera on Demand
- SaaS application accesses content in object storage for processing

# Tomorrows File transfer challenges

## Management and Reporting



### Console

- Collect / aggregate transfer data
- Transfer activity / reporting (UI, API)

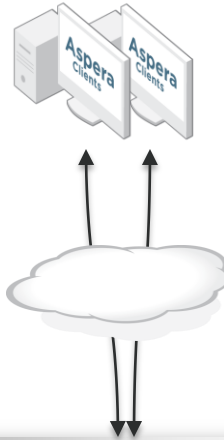


### Shares

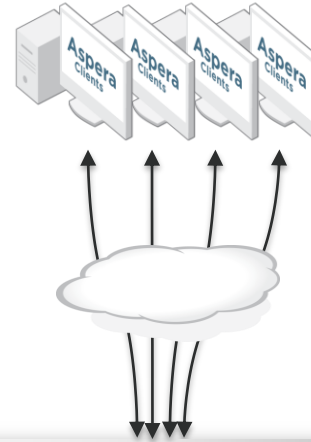
- User management
- Storage access control



Existing client transfers

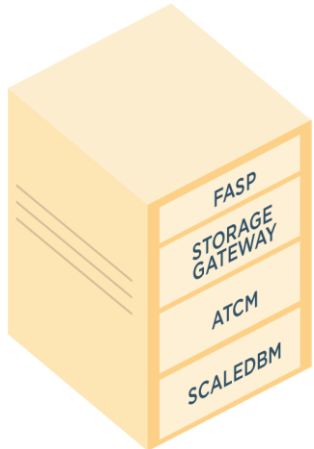


New Clients connect to "available" pool



## KEY COMPONENTS

- Cluster Manager for Auto-scale and Scaled DB
- Console Management UI + Reporting API
- Enhanced Client for Shares Authorizations
- Unified Access to Files/Directories (Browser, GUI, Command Line, SDK)



Utilization > high w/m

Available Pool

### Cluster Manager

- Monitor cluster nodes
- Determine eligibility for transfer scale up / down
- Create / remove db with replicas
- Add / remove node



Scale DB Persistence Layer

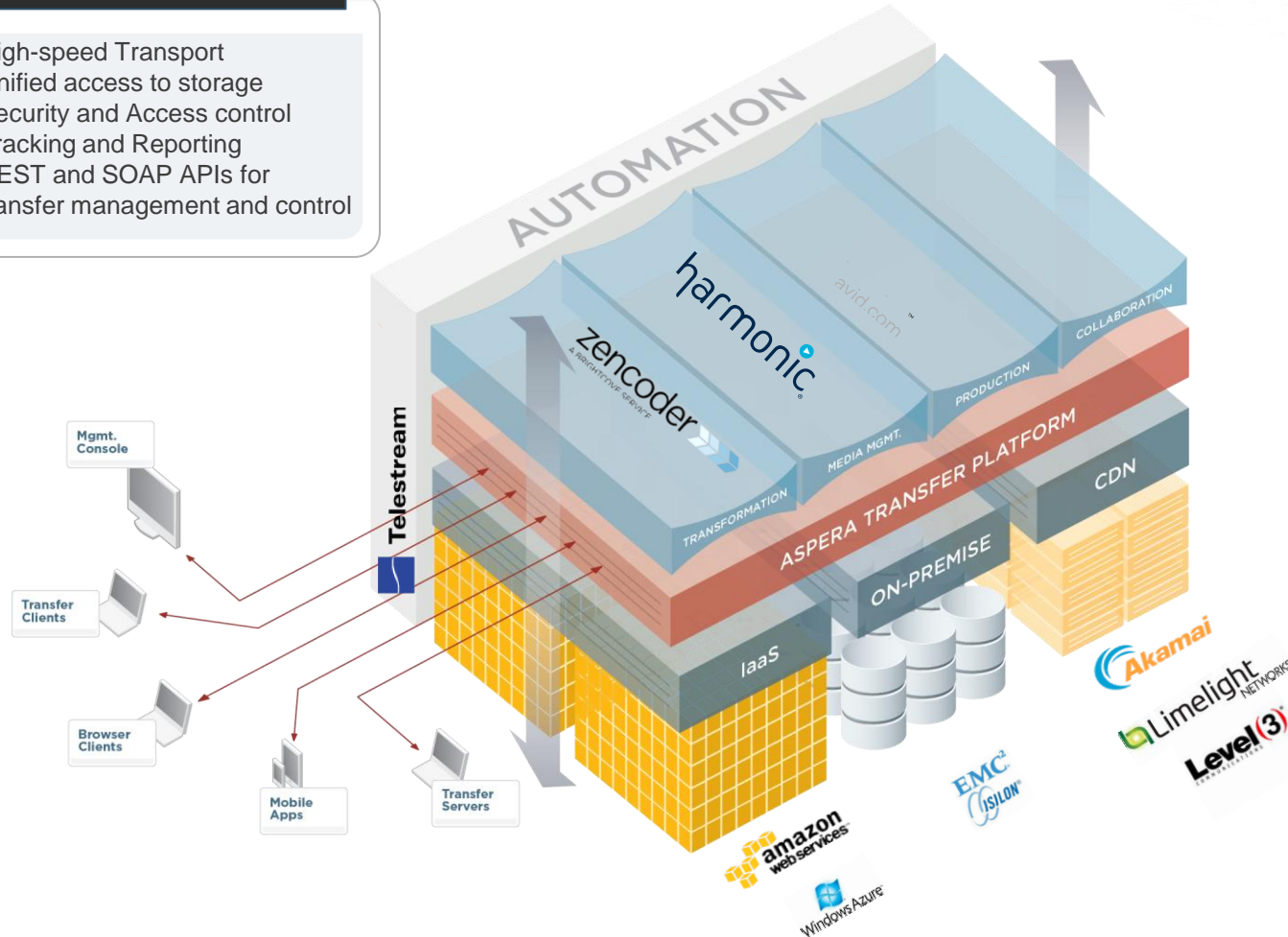


### Scaling Parameters

- Min/max number of t/s
- Utilization low/high watermark
- Min number of t/s in "available" pool
- Min number of idle t/s in "available" pool

## ASPERA TRANSFER PLATFORM

- High-speed Transport
- Unified access to storage
- Security and Access control
- Tracking and Reporting
- REST and SOAP APIs for transfer management and control



## ECOSYSTEM

### Automation

- Aspera Orchestrator
- Telestream Vantage

### Transformation

- Brightcove/Zencoder
- Elemental
- encoding.com
- Sony CI
- thePlatform
- Windows Azure

### Media Management

- Media Beacon
- Sony
- Vidisone

### Production

- Avid
- EVS

### Sharing / Collaboration

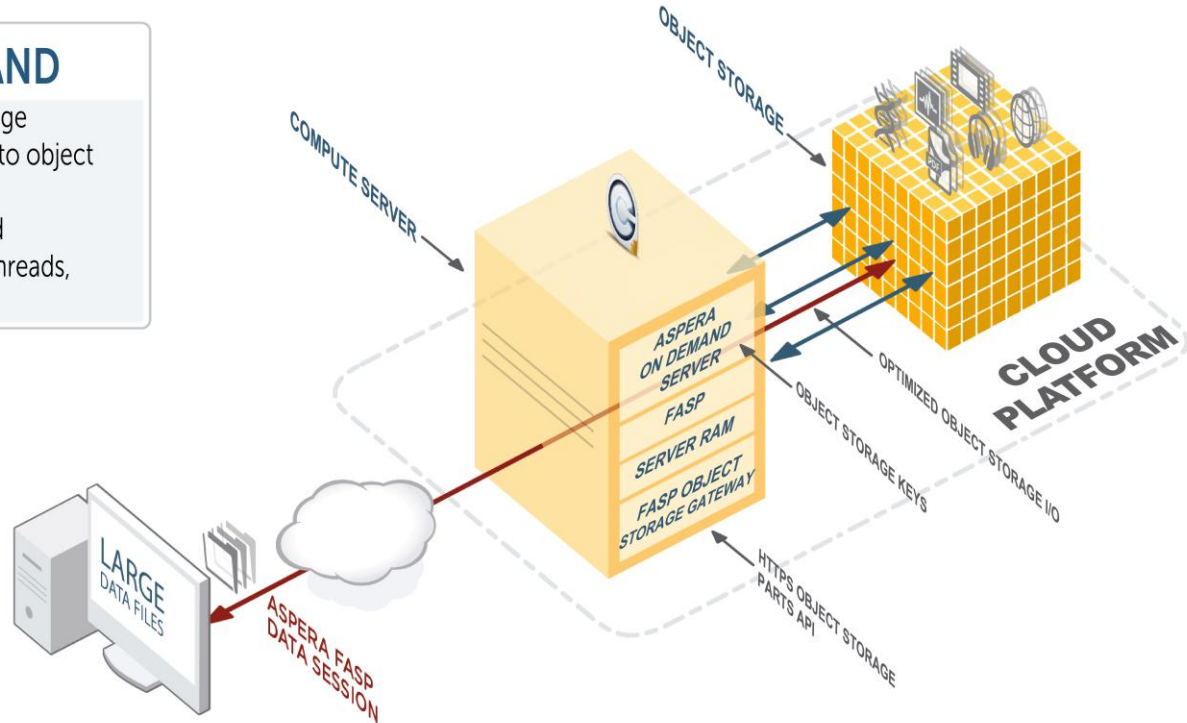
- Aspera Shares
- Aspera *aspex*

## THE SOLUTION

### ASPERA ON DEMAND

- Full client-side r/w of object storage
- Synchronous transfer from client to object storage (via Aspera On Demand)
- *asp*<sup>TM</sup> transfer speeds end-to-end
- Real-time optimization of HTTP threads, chunk size, interfaced to *asp*

## Client Software



## Road Map



## Performance

### EFFECTIVE THROUGHPUT

up to 1Gbps  
(per server Extra Large Instance)  
10TB per 24 hours



# aspera



THANK YOU FOR JOINING!

FOR MORE INFORMATION ON ANY ASPERA PRODUCT, PLEASE CONTACT:

[sales@asperasoft.com](mailto:sales@asperasoft.com)